

User Manual



Automated RCB culvert analysis, design and rating in accordance with the AASHTO LRFD Bridge Design Specifications, 5th Edition and AASHTO Standard Specifications for Bridge Design, 17th Edition

Developed For:



Developed By:



Table of Contents

1	Definitions	1
2	Abbreviations	1
3	Introduction	1
4	Main Project Window	2
5	Project Information	6
6	Culvert Geometry	8
7	Fill Properties	10
8	Live Load	11
9	Materials	16
10	Concrete Cover Dimensions	17
11	Load Factors, Load Modifiers and Exposure Factors	18
12	Analysis Options	21
13	Reinforcing	23
14	Analysis and Results	24
Appendix A	Input Field Default, Minimum, and Maximum Values	29

1 Definitions

Slab – The top horizontal member of the culvert

Floor – The bottom horizontal member of the culvert

Integral Wearing Surface – The sacrificial thickness on the top surface of the slab (intended for situations where the top surface of the slab serves as the roadway surface)

Mud Mat – The sacrificial thickness on the bottom surface of the floor

2 Abbreviations

AASHTO - American Association of State Highway and Transportation Officials

Iowa DOT – Iowa Department of Transportation

LFR – Load Factor Rating

LRFD – Load and Resistance Factor Design

LRFR – Load and Resistance Factor Rating

MCFT – Modified Compression Field Theory

RCB – Reinforced Concrete Box

LRFD Specifications – AASHTO LRFD Bridge Design Specifications, 5th Edition with Interims through 2010 (unless noted otherwise)

Standard Specifications – AASHTO Standard Specifications for Highway Bridges, 17th Edition - 2002

3 Introduction

CulvertCalc was developed for the Iowa DOT to automate the analysis, design and rating of RCB culverts. The Microsoft Windows-based program was originally developed to design RCB culverts according to the *LRFD Specifications* and Iowa DOT policies. A subsequent revision added a rating feature conforming to the *AASHTO Manual for Bridge Evaluation, 2nd Edition* with Interims through 2013 to CulvertCalc. Intended users for the program are professional engineers and technicians with a working knowledge of the *LRFD Specifications* and RCB culvert design.

CulvertCalc will analyze, design and rate single, twin and triple barrel RCB culverts with user-specified cell span and height dimensions. Various input screens allow the user to select and/or adjust a variety of variables used in the analysis, design and rating of a culvert such as live load properties, fill properties, load factors and material properties. By default, these variables are set to conform to the Iowa DOT policies used to design the RCB Culvert Standards. These default settings allow the user to analyze and design a standard culvert with a minimal amount of input. A customizable truck library allows the user to create custom trucks and save the library for future use.

When in design mode, CulvertCalc will automatically design a RCB culvert and provide a tabular output of the required member thicknesses and various reinforcing properties as well as short- and long-format design reports. CulvertCalc will also check a design for compliance to applicable code provisions using member thicknesses and reinforcing properties entered by the user and provide an on-screen summary of non-compliant components, as well as short- and long-format reports that can be printed or saved for documentation purposes. Lastly, CulvertCalc will load rate a design with no additional user input. The governing rating factors are displayed on-screen and with additional details of the rating calculations provided in short- and long-format rating reports.

When in rating mode, the Reinforcing input screen is used to enter the size and spacing for the reinforcing at critical locations. The user then has the option to either perform a load rating by the LRFR method according to the *LRFD Specifications* or a load rating by the LFR method according to the *Standard Specifications*. In order to be consistent with older design standards, horizontal and vertical earth pressures for a load rating by the LFR method can either be calculated according to the *Standard Specifications* or according to the Iowa DOT “Office Loading”. Refer to the CulvertCalc Technical Manual for definition of the Iowa DOT “Office Loading”.

4 Main Project Window

The Main Project Window, as shown in Figure 4-1, serves as a container for the various Input Screens and Analysis and Results Screen and also features common program functions such as opening and saving files. The commands provided in the Main Project Window are as follows:

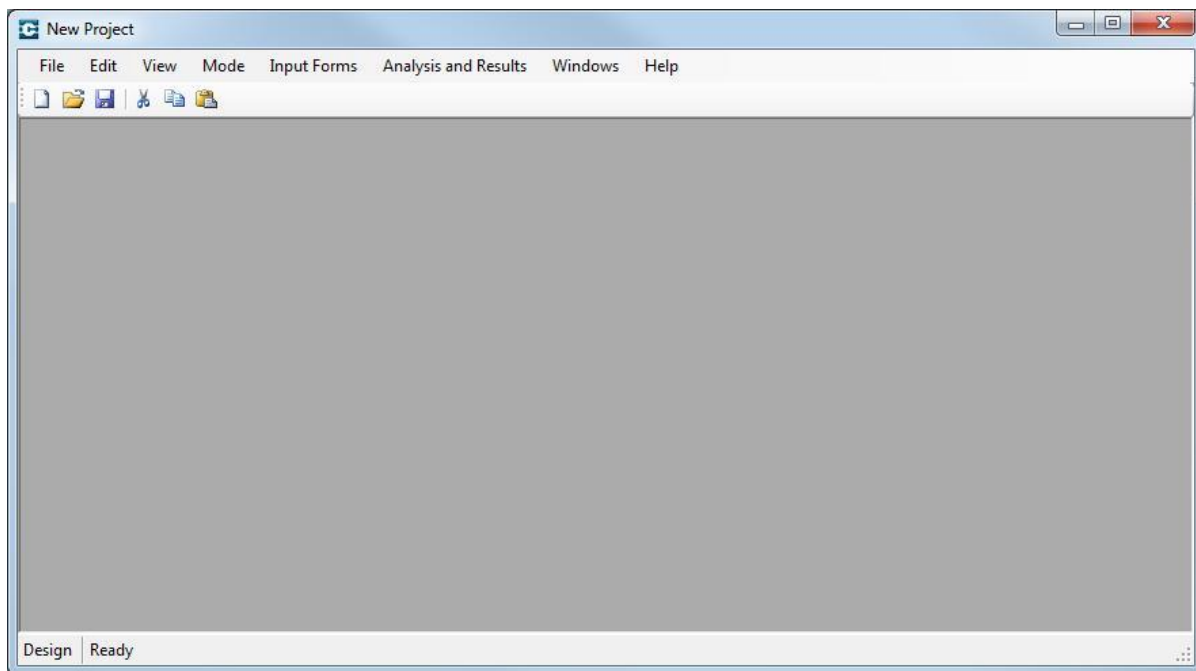


Figure 4-1 Main Project Window

- *File | New* menu item

This command creates a new file with blank input fields and all input options in their default settings. A prompt will ask if the current file should be saved prior to creating the new file.

- *File | Open* menu item

This command opens a standard dialog window for opening previously saved files. The files will have an “.rcb” extension. A prompt will ask if the current file should be saved prior to opening the new file.

- *File | Save* menu item

This command saves the existing input information to the current file. If the file was not previously saved, a standard dialog window will open for entering the desired file name and choosing a directory location.

- *File | Save As* menu item

This command saves the existing input information to a different file name. Use the standard dialog window to enter or select the desired file name and choose a directory location.

- *File | Preferences* menu item

Use this command to change the directory in which the report text files will be saved. Press the button to the right of the text field to navigate to the desired directory or type the directory path directly into the text field.

- *File | Exit* menu item

This command closes the CulvertCalc program. A prompt will ask if the current file should be saved prior to closing the program.

- *File | *.rcb* menu item

A list of most recently used files is provided under the File menu. Selecting a file name from the list will open the selected file.

- *Edit | Cut* menu item

This command will delete the selected text and place the selected text on the clipboard. The shortcut keys “*Ctrl-X*” will also execute this command.

- *Edit | Copy* menu item

This command places a copy of the selected text on the clipboard. The shortcut keys “*Ctrl-C*” will also execute this command.

- *Edit | Paste* menu item

This command inserts text from the clipboard at the selected location. The shortcut keys “Ctrl-V” will also execute this command.

- *Edit | Select All* menu item

This command selects all information in the current input field. The shortcut keys “Ctrl-A” will also execute this command.

- *View | Toolbar* menu item

This command toggles the display of the toolbar on and off. The toolbar is located under the menu items and contains buttons for frequently used commands.

- *View | Status Bar* menu item

This command toggles the display of the status bar on and off. The status bar is located at the bottom of the Main Project Window and displays the current program status.

- *Mode | Design* menu item

This command configures CulvertCalc for the design of a RCB culvert. Several of the input screens are modified for input applicable to the design function and the Analysis and Results screen is displayed in the design format. The status bar will change to indicate CulvertCalc is in design mode.

- *Mode | Rating | English Units* menu item

This command configures CulvertCalc for the rating of a RCB culvert using English input units. Several of the input screens are modified for input applicable to the rating function and the Analysis and Results screen is displayed in the rating format. The Reinforcing input screen is also available in the Input Forms menu. The status bar will change to indicate CulvertCalc is in rating mode.

- *Mode | Rating | Metric Units* menu item

This command configures CulvertCalc for the rating of a RCB culvert using metric input units. Several of the input screens are modified for input applicable to the rating function and the Analysis and Results screen is displayed in the rating format. The Reinforcing input screen is also available in the Input Forms menu. The status bar will change to indicate CulvertCalc is in rating mode.

- *Input Forms | Project Information* menu item

This command opens the Project Information screen. If currently open, this command will bring the Project Information screen to the front of any other open screens.

- *Input Forms | Culvert Geometry* menu item

This command opens the Culvert Geometry screen. If currently open, this command will bring the Culvert Geometry screen to the front of any other open screens.

- *Input Forms | Fill Properties* menu item

This command opens the Fill Properties screen. If currently open, this command will bring the Fill Properties screen to the front of any other open screens.

- *Input Forms | Live Load* menu item

This command opens the Live Load screen. If currently open, this command will bring the Live Load screen to the front of any other open screens.

- *Input Forms | Materials* menu item

This command opens the Materials screen. If currently open, this command will bring the Materials screen to the front of any other open screens.

- *Input Forms | Concrete Cover Dimensions* menu item

This command opens the Concrete Cover Dimensions screen. If currently open, this command will bring the Concrete Cover Dimensions screen to the front of any other open screens.

- *Input Forms | Load Factors, Load Modifiers and Exposure Factors* menu item

This command opens Load Factors, Load Modifiers and Exposure Factors screen. If currently open, this command will bring the Load Factors, Load Modifiers and Exposure Factors screen to the front of any other open screens.

- *Input Forms | Analysis Options* menu item

This command opens Analysis Options screen. If currently open, this command will bring the Reinforcing screen to the front of any other open screens.

- *Input Forms | Reinforcing* menu item

This command opens Reinforcing screen when CulvertCalc is in rating mode. If currently open, this command will bring the Reinforcing screen to the front of any other open screens.

- *Analysis and Results* menu item

This command opens Analysis and Results screen. Configuration of the Analysis and Results screen will change based on whether CulvertCalc is in design or rating mode. If currently open, this command will bring the Analysis and Results screen to the front of any other open screens.

- *Windows / Cascade* menu item

This command arranges all open screens in a cascade pattern starting in the upper left corner of the Main Project Window.

- *Windows / Tile Vertical* menu item

This command arranges all open screens in a vertical pattern within the Main Project Window.

- *Windows / Tile Horizontal* menu item

This command arranges all open screens in a horizontal pattern within the Main Project Window.

- *Windows / Close All* menu item

This command closes all open screens.

- *Windows / Arrange Icons* menu item

This command arranges icons for minimized windows along the bottom of the Main Project Window.

- *Help / Contents* menu item

This command provides access to the User Manual and Technical Manual.

- *Help / About* menu item

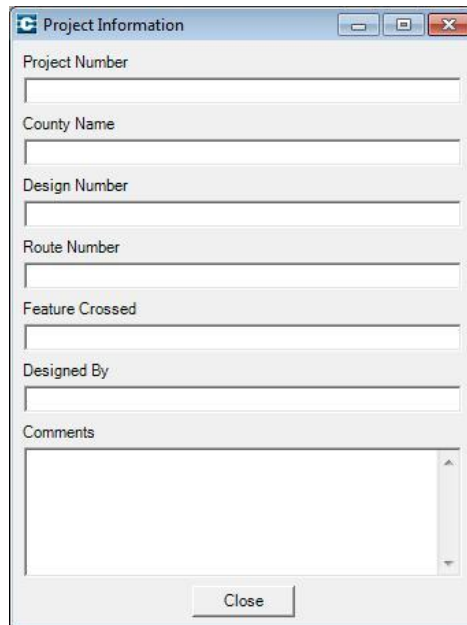
This command opens a screen displaying general information pertaining to CulvertCalc and the legal disclaimer.

5 Project Information

The Project Information screen configuration changes to reflect the program mode. The Project Information screen is configured as shown in Figure 5-1 and Figure 5-2 for design and rating modes, respectively. Inputs for the following general project information items are available:

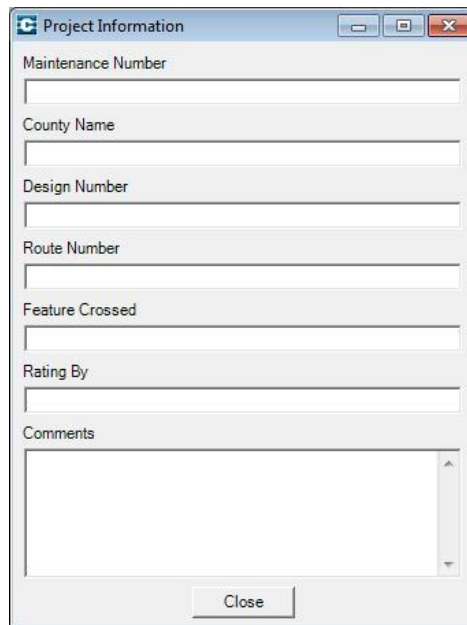
- Project Number (Design Mode) / Maintenance Number (Rating Mode)
- County Name
- Design Number
- Route Number
- Feature Crossed
- Designed By

- Comments



The image shows a software window titled "Project Information" with a standard Windows-style title bar (minimize, maximize, close buttons). The window contains several input fields stacked vertically: "Project Number", "County Name", "Design Number", "Route Number", "Feature Crossed", "Designed By", and a larger "Comments" field with a vertical scrollbar. A "Close" button is located at the bottom center of the window.

Figure 5-1 Project Information Screen – Design Mode



The image shows a software window titled "Project Information" with a standard Windows-style title bar. The layout is similar to Figure 5-1, but the input fields are: "Maintenance Number", "County Name", "Design Number", "Route Number", "Feature Crossed", "Rating By", and a larger "Comments" field with a vertical scrollbar. A "Close" button is located at the bottom center of the window.

Figure 5-2 Project Information Screen – Rating Mode

Each input field is limited to 32,767 characters. Multiline text can be entered into the *Comments* field whereas the remaining fields are limited to single line text.

6 Culvert Geometry

The Culvert Geometry screen configuration changes to reflect the program mode. The Culvert Geometry screen is configured as shown in Figure 6-1 and Figure 6-2. The following geometrical dimensions for the RCB culvert are entered in the Culvert Geometry screen:

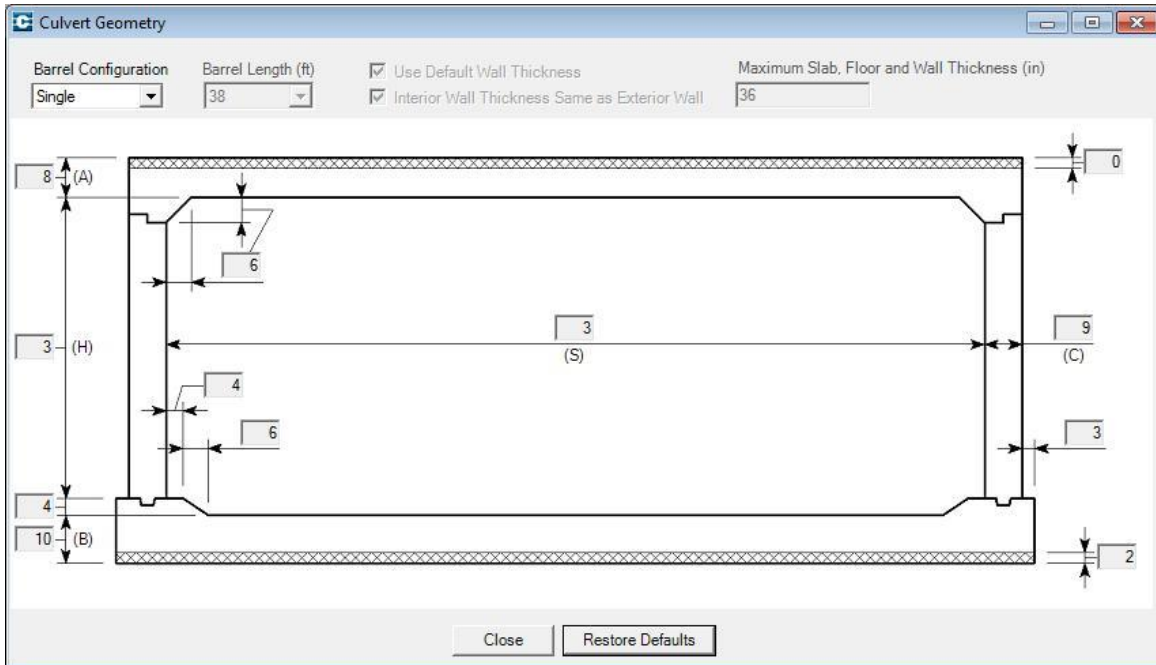


Figure 6-1 Culvert Geometry Screen – Design Mode

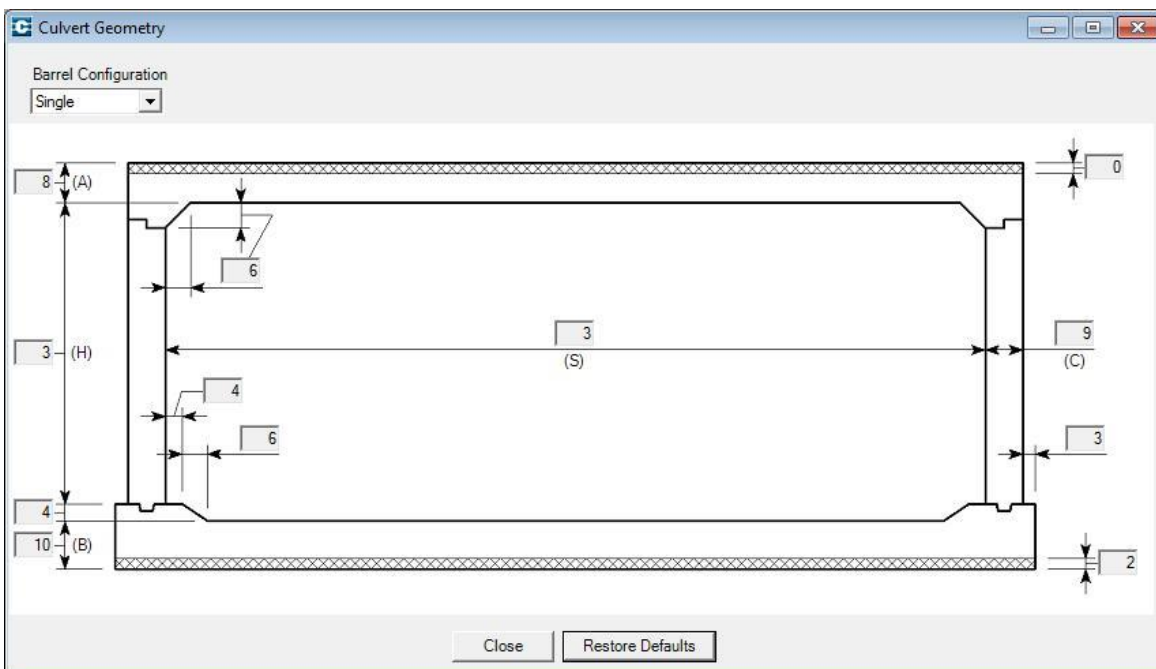


Figure 6-2 Culvert Geometry Screen – Rating Mode

- *Barrel Configuration* combo box

Select “Single”, “Twin” or “Triple” from the list. The barrel section graphic will update according to the selected configuration.

- *Barrel Length* combo box (Design Mode only)

Select length of barrel between transverse construction joints from the list. Lengths are set in 3 ft. increments between 11 ft. and 59 ft.

- *Use Default Wall Thickness* checkbox (Design Mode only)

When checked, the minimum exterior and interior (for twin and triple barrel configurations) wall thickness will be set to the maximum of 9 in. or the Cell Height divided by 12. If unchecked, the user should enter the desired minimum wall thicknesses in the appropriate input fields.

- *Maximum Slab, Floor and Wall Thickness* input field (Design Mode only)

Enter the maximum limit for slab, floor and wall thickness. A notice will be provided during an Auto Design if the required member thickness exceeds the provided limit.

- *Interior Wall Thickness Same as Exterior Wall* checkbox (Design Mode only)

When twin and triple barrel configurations are selected, the interior wall thickness can be set to match the exterior wall thickness by checking the checkbox. Otherwise, the interior wall thickness will be independent of the exterior wall thickness.

- *Cell Span and Cell Height* input fields

Enter cell span and cell height in the appropriate input fields on the barrel section graphic. For twin and triple barrel configurations, all cell spans must be equal.

- *Minimum Slab, Floor, Exterior Wall, and Interior Wall Thickness* input fields

When in design mode, enter the minimum desired member thicknesses on the barrel section graphic. The program will increase the member thicknesses as necessary if the minimum thicknesses cannot withstand the applied loads. When in rating mode, enter the actual member thicknesses.

- *Haunch, Frost Trough and Floor Extension* input fields

Enter the haunch, frost trough and floor extension dimensions on the barrel section graphic. The haunch is set at a constant 45° angle thus the length and width dimensions will be the same value. The haunch and frost trough geometry will be the same for each corner for all barrels.

- *Mud Mat and Integral Wearing Surface* input fields

Enter the mud mat thickness and integral wearing surface thickness on the barrel section graphic. For structural capacity calculations, the mud mat and wearing surface are subtracted from the overall floor and slab thickness, respectively, to determine the effective thickness of these members.

Holding the cursor over each field will display a hint that defines the input field, appropriate input units and allowable value range. For design mode and rating mode in English units, cell span and cell height are entered in *feet* units and all remaining values are entered in *inch* units. For rating mode in metric units, all dimensions are entered in millimeters. A warning is displayed if an entered value is outside of an allowable range and the input field background changes to red. Press *OK* and change the value to be within the allowable range. The red background will change back to grey indicating the entered value is acceptable. All input fields, except the cell span and cell height, may be reset to default values by pressing *Restore Defaults*. Refer to the Appendix for a listing of the default, minimum, and maximum values for each field.

7 Fill Properties

The Fill Properties screens for design and rating modes are presented in Figure 7-1 and Figure 7-2, respectively. Fill height and other variables related to lateral loads on the RCB culvert are entered in the Fill Properties screen as follows:

Figure 7-1 Fill Properties Screen – Design Mode

a. English units

b. Metric units

Figure 7-2 Fill Properties Screen – Rating Mode

- *Design Barrel for Multiple Fill Heights* checkbox (Design Mode only)

Check this box if culvert designs for multiple fill heights are desired and enter appropriate values in the *Min. Fill Height*, *Max. Fill Height*, and *Fill Height Increment* input fields. Otherwise, a single design will be provided for the fill height entered in the *Fill Height* input field.

- *Fill Height* input field

Enter the design fill height for a single design when in design mode. Enter the fill height to be used for the rating when in rating mode.

- *Installation Condition* combo box

Select either “Embankment” or “Trench” installation condition. If “Embankment” is selected, the soil-structure interaction factor will be internally calculated per the *LRFD Specifications*. The soil-structure interaction factor will be limited to 1.15 if *Backfill Is Compacted Along Walls* is checked, otherwise, the soil-structure interaction factor will be limited to 1.40. If “Trench” is selected, the *Soil-Structure Interaction Factor* input field is active and the desired soil-structure interaction factor should be entered.

- *Include Hydrostatic Pressure* checkbox (Design Mode only)

Check if hydrostatic pressure due to water inside the box should be included in the design. When checked, the *Water Height Above Bottom of Slab* input field is active and the distance between the water surface and the bottom of the slab should be entered.

- *Pavement Thickness* input field

Enter pavement thickness in this field. The pavement is treated as a surcharge load on the RCB culvert. This input field is inactive when in the load rating method is set to LFR while in rating mode.

Holding the cursor over each input field will display a hint that defines the allowable value range. A warning is displayed if an entered value is outside of an allowable range and the input field background changes to red. Press *OK* and change the value to be within the allowable range. The red background will change back to grey indicating the entered value is acceptable. All checkboxes, combo boxes and input fields, except those in the *Fill Height* group, may be reset to default values by pressing *Restore Defaults*. Refer to the Appendix for a listing of the default, minimum, and maximum values for each field.

8 Live Load

The Live Load screen is presented in Figure 8-1. Various properties and variables related to the live load are entered on the Live Load screen as follows:

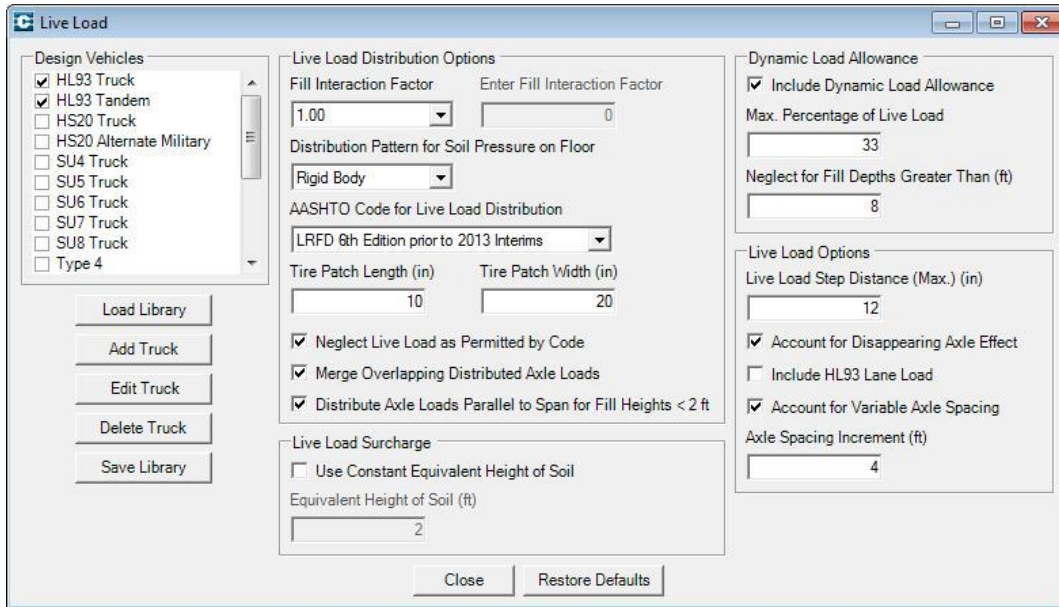


Figure 8-1 Live Load Screen

- *Design Vehicles* checked list box

Indicate whether a vehicle will or will not be included in the design or rating using the checkbox next to each vehicle name. A number of design vehicles are preloaded into the checked list box, including the HL93 truck and tandem and the HS20 truck and alternate military load. The HL93 vehicles are only applicable for design and for a load rating by the LRFR method and will not be included in a load rating by the LFR method, regardless of whether they are checked or unchecked. Likewise, the HS20 vehicles are only applicable for a load rating by the LFR method and will not be included in a design or load rating by the LRFR method, regardless of whether they are checked or unchecked.

- *Load Library* button

Press to load a previously created custom truck library to internal memory. Use the dialog box to navigate to and select the desired *.trk file. Once opened, each truck saved in the selected file will appear in the *Design Vehicles* checked list box. If the selected file contains a truck with the same name as one that already appears in the *Design Vehicles* checked list box, a prompt will ask whether or not the existing truck should be overwritten.

- *Add Truck* button

Press to open the *Truck Editor* screen, presented in Figure 8-2, and enter a name for the truck in the *Truck Name* input field. Select the number of axles from the *Number of Axles* combo box and enter the individual axle weights and axle spacings in the appropriate input fields. If the truck will be used for load rating purposes, select the

appropriate truck type from the *Truck Type for Load Rating* combo box. Once all information is entered, press *Save* to save the new truck to internal memory and close the program. The name of the new truck will appear in the *Design Vehicles* checked list box.

Figure 8-2 Truck Editor Screen

- *Edit Truck* button

To edit the information associated with a particular truck, select the truck from the *Design Vehicles* checked list box and press *Edit Truck* to open the *Truck Editor*. In the *Truck Editor*, revise the appropriate values and press *Save* when finished. The revised truck is now saved to internal memory.

- *Delete Truck* button

To delete a truck from internal memory, select the truck from the *Design Vehicles* checked list box and press *Delete Truck*. A prompt will confirm whether or not the truck should be deleted.

- *Save Library* button

Press *Save Library* to save the trucks shown in the *Design Vehicles* checked list box (excluding the preloaded trucks). Use the dialog box to navigate to the desired directory and to enter the file name.

- *Fill Interaction Factor* combo box

Select “1.00”, “1.15”, or “Other” from the *Fill Interaction Factor* combo box. If “Other” is selected, enter the desired fill interaction factor in the *Enter Fill Interaction Factor* input field. If CulvertCalc is in rating mode and LFR is selected on the Analysis Options screen, the *Fill Interaction Factor* combo box and *Enter Fill Interaction Factor* input field will be disabled and the fill interaction factor will be set to 1.75 per the *Standard Specifications*.

- *Distribution Pattern for Soil Pressure on Floor* combo box

Select “Rigid Body” if the soil pressure acting on floor due to live load should be assumed to vary lineally along the width of the floor. Otherwise, select “Uniform” to assume the soil pressure acting on the floor due to live load is uniform along the width of the floor.

- *AASHTO Code for Live Load Distribution* combo box

An update to the live load distribution model in the *LRFD Specifications* occurred with the release of the 2013 Interims to the 6th Edition. To utilize the newer live load distribution model, select “LRFD 6th Edition with 2013 Interims”. Select “LRFD 6th Edition prior to 2013 Interims” to utilize the older live load distribution model. If CulvertCalc is in rating mode and LFR is selected on the Analysis Options screen, the *AASHTO Code for Live Load Distribution* combo box will be disabled.

- *Tire Patch Length and Tire Patch Width* input fields

Enter the tire patch dimensions in the appropriate fields. The tire patch length is measured parallel to the span and the tire patch width is measured perpendicular to the span. If CulvertCalc is in rating mode and LFR is selected on the Analysis Options screen, the *Tire Patch Length and Tire Patch Width* input fields will be disabled.

- *Neglect Live Load as Permitted by Code* checkbox

Check if the live load should be neglected when the fill height exceeds the limits specified in the *LRFD Specifications* and *Standard Specifications*. If unchecked, live load will be included regardless of fill height.

- *Merge Overlapping Distributed Axle Loads* checkbox

If checked, any distributed axle loads that overlap will be summed and uniformly distributed over the extent of the overlapping axles. If unchecked, the distributed axle loads will simply overlap each other.

- *Distribute Axle Loads Parallel to Span for Fill Heights < 2 ft* checkbox

If checked, the concentrated axle loads for fill heights less than 2 ft. will be distributed parallel to the span based on the fill height, fill interaction factor, and the tire patch length. If unchecked, each axle load will be treated as a concentrated force for fill heights less than 2 ft.

- *Include Dynamic Load Allowance* checkbox

Check if the dynamic load allowance should be added to the live load and uncheck to neglect the dynamic load allowance. If checked, the *Max. Percentage of Live Load and Neglect for Fill Depths Greater Than* input fields will become active. Enter the percentage of live load to use when the top of the slab is also the roadway surface (0 ft.

fill height) in the *Max. Percentage of Live Load* input field. Enter the fill height at which the dynamic load allowance is to be neglected in the *Neglect for Fill Depths Greater Than* input field. Dynamic load allowance will vary linearly for fill heights between 0 ft. and the value entered in the *Neglect for Fill Depths Greater Than* input field. If CulvertCalc is in rating mode and LFR is selected on the Analysis Options screen, the *Max. Percentage of Live Load* and *Neglect for Fill Depths Greater Than* input fields will be disabled and the dynamic load allowance (impact) will be calculated per the *Standard Specifications*.

- *Live Load Step Distance (Max.)* input field

Each truck is “walked” across the RCB culvert in a series of successive positions. Enter the distance between successive truck positions in the *Live Load Step Distance (Max.)* input field. A smaller distance will result in more live load positions giving a more refined section force envelope. A larger distance will result in less live load positions and shorter computational time. The default value, 12 in., is recommended as a balance between acceptable section force envelopes and reasonable computational time.

- *Account for Disappearing Axle Effect* checkbox

The disappearing axle effect occurs when axle loads that do not contribute to maximizing the force effect are eliminated from the analysis. Check the *Account for Disappearing Axle Effect* checkbox to apply the disappearing axle effect in the analysis. Uncheck to include all axles in the analysis regardless of whether or not they maximize a particular force effect.

- *Include HL93 Lane Load* checkbox

If checked, HL93 lane load will be included in the HL93 live load analysis. If neither the HL93 truck nor HL93 tandem is selected in the *Design Vehicles* checked list box, the HL93 live load analysis will consist solely of the HL93 lane load. HL93 lane load is neglected when the *HL93 Lane Load* checkbox is unchecked. HL93 lane load is always neglected from the SU8 and owner-defined live load analysis, regardless of whether or not the *HL93 Lane Load* checkbox is checked. If CulvertCalc is in rating mode and LFR is selected on the Analysis Options screen, the *Include HL93 Lane Load* checkbox will be disabled.

- *Account for Variable Axle Spacing* checkbox

Variable axle spacing is only applicable to the HL93 Truck and the SU8 truck. For the HL93 truck, the rear axle spacing can vary from 14 ft. to 30 ft. For the SU8 truck, the front axle spacing can vary from 6 ft. to 14 ft. If checked, the *Axle Spacing Increment* input field will become active. For each successive run of the truck across the RCB culvert, the variable axle spacing will be increased by the value entered in the *Axle Spacing Increment* input field until either the maximum axle spacing is reached or the

axle spacing is greater than the overall width of the RCB culvert. If unchecked, the shortest axle spacing will be used in the live load analysis.

- *Use Constant Equivalent Height of Soil* checkbox

If checked, the equivalent height of soil used to account for live load surcharge will be set at the value specified in the *Equivalent Height of Soil* input field. If unchecked, the equivalent height of soil will be calculated based on fill height and the RCB culvert geometry. If CulvertCalc is in rating mode and LFR is selected on the Analysis Options screen, the *Use Constant Equivalent Height of Soil* checkbox and *Equivalent Height of Soil* input field will be disabled and the equivalent height of soil for live load surcharge will be calculated according to the *Standard Specifications*.

Holding the cursor over each input field will display a hint that defines the allowable value range. A warning is displayed if an entered value is outside of an allowable range and the input field background changes to red. Press *OK* and change the value to be within the allowable range. The red background will change back to grey indicating the entered value is acceptable. All checkboxes, combo boxes and input fields, except those in the *Design Vehicles* checked list box, may be reset to default values by pressing *Restore Defaults*. Refer to the Appendix for a listing of the default, minimum, and maximum values for each field.

9 Materials

The Materials screens for design and rating modes are presented in Figure 9-1 and Figure 9-2, respectively. The following properties for the various materials used in the RCB culvert analysis, design and rating are entered in the *Materials* screen:

Material	Property	Value
Concrete	Unit Weight (kcf)	0.15
	Compressive Strength (ksi)	4
	Max. Aggregate Size (in)	0.75
Reinforcing Steel	Yield Strength (ksi)	60
Soil	Unit Weight (kcf)	0.12
	Effective Friction Angle (deg)	30
Water	Unit Weight (kcf)	0.0624
Pavement	Unit Weight (kcf)	0.15

Figure 9-1 Materials Screen – Design Mode

a. English units

b. Metric units

Figure 9-2 Materials Screen – Rating Mode

- Concrete Unit Weight
- Concrete Compressive Strength
- Maximum Aggregate Size (Design Mode only)
- Reinforcing Steel Yield Strength
- Soil Unit Weight
- Effective Friction Angle for Soil
- Water Unit Weight (Design Mode only)
- Pavement Unit Weight

The *Soil Unit Weight*, *Effective Friction Angle for Soil* and *Pavement Unit Weight* inputs are applicable to only a design or a load rating by the LRFR method. For a load rating by the LFR method, the soil unit weight is set within CulvertCalc as 0.120 kips per cubic foot (kcf) for a load rating by the *Standard Specifications* and as 0.140 kcf for a load rating using the Iowa DOT “Office Loading” and the effective friction angle and pavement unit weight are not applicable to the horizontal and vertical earth pressure calculations.

Holding the cursor over each input field will display a hint that defines the allowable value range. A warning is displayed if an entered value is outside of an allowable range and the input field background changes to red. Press *OK* and change the value to be within the allowable range. The red background will change back to grey indicating the entered value is acceptable. All input fields may be reset to default values by pressing *Restore Defaults*. Refer to the Appendix for a listing of the default, minimum, and maximum values for each field.

10 Concrete Cover Dimensions

The Concrete Cover Dimensions screen is presented in Figure 10-1 for both English and metric input units. The metric units screen is only accessible when metric input units are selected for

rating mode. Concrete cover dimensions for various locations in the RCB culvert are entered in the *Concrete Cover Dimensions* screen as follows:

a. English units

b. Metric units

Figure 10-1 Concrete Cover Dimensions Screen

- Typical Edge Clearance
- Edge Clearance for Transverse Reinforcing in Top of Slab
- Edge Clearance for Transverse Reinforcing in Top of Floor
- Edge Clearance for Transverse Reinforcing in Bottom of Floor
- End Clearance at Top of Vertical Reinforcing
- End Clearance at Bottom of Vertical Reinforcing
- End Clearance at Ends of Transverse Reinforcing

Holding the cursor over each input field will display a hint that defines the allowable value range. A warning is displayed if an entered value is outside of an allowable range and the input field background changes to red. Press *OK* and change the value to be within the allowable range. The red background will change back to grey indicating the entered value is acceptable. All input fields may be reset to default values by pressing *Restore Defaults*. Refer to the Appendix for a listing of the default, minimum, and maximum values for each field.

11 Load Factors, Load Modifiers and Exposure Factors

The Load Factors, Load Modifiers and Exposure Factors screen configuration changes to reflect the program mode. The design mode screen is presented in Figure 11-1 and rating mode screen is presented in Figure 11-2.

Strength I			Strength II			Service I	
	Load Factor	Load Modifier		Load Factor	Load Modifier		Load Factor
DC (Max.)	1.25	1	DC (Max.)	1.25	1	DC	1
DC (Min.)	0.9	1	DC (Min.)	0.9	1	DW	1
DW (Max.)	1.5	1	DW (Max.)	1.5	1	EH	1
DW (Min.)	0.65	1	DW (Min.)	0.65	1	EV	1
EH (Max.)	1.35	1.05	EH (Max.)	1.35	1.05	LL+IM	1
EH (Min.)	1	1	EH (Min.)	1	1	LS	1
EV (Max.)	1.3	1.05	EV (Max.)	1.3	1.05	WA	1
EV (Min.)	0.9	1	EV (Min.)	0.9	1		
LL+IM	1.75	1	LL+IM	1.35	1	Exposure Factor	
LS	1.75	1	LS	1.35	1	Slab	1
WA	1	1	WA	1	1	Walls	1
						Floor	1

Figure 11-1 Load Factors, Load Modifiers and Exposure Factors Screen for Design Mode

Strength I Load Factors		Strength II Load Factors		Capacity Factors		Load Factor Rating	
DC (Max.)	1.25	DC (Max.)	1.25	Condition Factor	1	Gamma Factor	
DC (Min.)	0.9	DC (Min.)	0.9	System Factor	1	Group X	1.3
DW (Max.)	1.5	DW (Max.)	1.5			Beta Factors	
DW (Min.)	0.65	DW (Min.)	0.65			DC	1
EH (Max.)	1.35	EH (Max.)	1.35			LL+IM / LS (Inv.)	1.67
EH (Min.)	1	EH (Min.)	1			LL+IM / LS (Opr.)	1
EV (Max.)	1.3	EV (Max.)	1.3			EV	1
EV (Min.)	0.9	EV (Min.)	0.9			EH (Max.)	1
LL+IM / LS (Dsn. Inv.)	1.75	LL+IM / LS (Permit)	1.4			EH (Min.)	0.5
LL+IM / LS (Dsn. Opr.)	1.35						
LL+IM / LS (Legal)	2						

Figure 11-2 Load Factors, Load Modifiers and Exposure Factors Screen for Rating Mode

When in design mode, load factors and load modifiers for Strength I, Strength II and Service I load combinations and exposure factors for checking crack control provisions are entered in the *Load Factors* screen as follows:

Load factors and load modifiers for Strength I and Strength II Load Combinations-

- DC (Min. & Max.)
- DW (Min. & Max.)
- EH (Min. & Max.)

- EV (Min. & Max.)
- LL + IM
- LS
- WA

Load factors for Service I Load Combination-

- DC
- DW
- EH
- EV
- LL + IM
- LS
- WA

Exposure Factors-

- Slab
- Walls
- Floor

For rating mode, the *Load Factors* screen has two separate input groups; one pertaining to load ratings by the LRFR method and one pertaining to load ratings by the LFR method. The LRFR group includes input fields for Strength I and Strength II load factors and capacity factors. The LFR group includes input fields for gamma and beta factors. The various inputs on the *Load Factors* screen when in rating mode are as follows:

Load factors for LRFR Strength I and Strength II Load Combinations-

- DC (Min. & Max.)
- DW (Min. & Max.)
- EH (Min. & Max.)
- EV (Min. & Max.)
- LL + IM / LS (Design Inventory) – For Strength I only

- LL + IM / LS (Design Operating) – For Strength I only
- LL + IM / LS (Legal) – For Strength I only
- LL + IM / LS (Permit) – For Strength II only

Capacity Factors for LRFR

- Condition Factor
- System Factor

Gamma Factor for LFR-

- Group X

Beta Factors for LFR-

- DC
- LL + IM / LS (Inventory)
- LL + IM / LS (Operating)
- EV
- EH (Max.)
- EH (Min.)

Holding the cursor over each input field will display a hint that defines the allowable value range. A warning is displayed if an entered value is outside of an allowable range and the input field background changes to red. Press *OK* and change the value to be within the allowable range. The red background will change back to grey indicating the entered value is acceptable. All input fields may be reset to default values by pressing *Restore Defaults*. Refer to the Appendix for a listing of the default, minimum, and maximum values for each field.

12 Analysis Options

The Analysis Options screen is presented in Figure 12-1. The various options in this screen for design and rating are as follows:

- *Vary Shear Critical Section Location in Slab with Fill Depth* checkbox

If checked, the location of the critical section in the slab used in the shear capacity calculations will depend upon the fill depth. For fill depths less than 2 ft., the critical section will be taken at the end of the haunch. For fill depths 2 ft. or greater, the critical section will be taken at a distance d_v from the end of the haunch. If not checked, the critical section location for the slab shear capacity calculations will be at a distance d_v from the end of the haunch, regardless of fill depth.

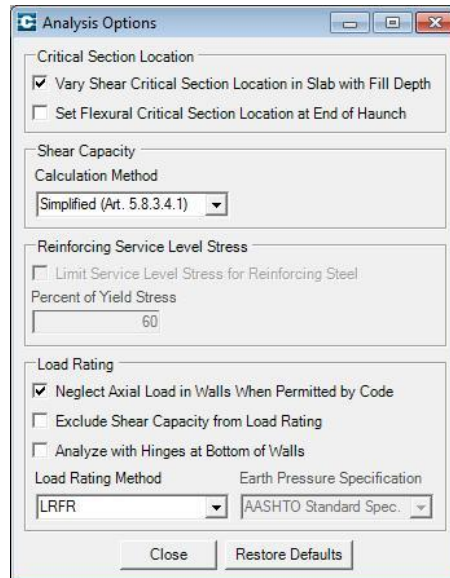


Figure 12-1 Analysis Options Screen

- *Set Critical Section Location at End of Haunch* checkbox

If checked, the flexural critical section location will be set at the end of the haunch in the slab, floor and walls. If not checked, the flexural critical section location will vary within the haunch based on the geometry of the haunch and the associated member thickness.

- *Shear Capacity Calculation Method* combo box

Select “Simplified (Art. 5.8.3.4.1)”, “MCFT (Art. 5.8.3.4.2)” or “Best Result” from the list. “Best Result” will utilize the shear calculation method that returns the greatest shear capacity. For all three methods, the provisions of Art. 5.14.5.3 are utilized for determining the shear capacity of slabs and floors on RCB culverts under 2 ft. or more of fill. This option is only applicable to design and rating according to the *LRFD Specifications*.

- *Reinforcing Service Level Stress* checkbox

If checked, an additional design check will be performed to ensure the service level stress in the reinforcing does not exceed the limit entered by the user in the *Percent of Yield Stress* textbox. This design check is in addition to the crack control provisions of the *LRFD Specifications*. If not checked, no specific limit will be imposed on the reinforcing service level stress.

- *Neglect Axial Load in Walls When Permitted by Code* checkbox

If checked, axial load in the walls will be neglected when the axial load is below the threshold specified by the applicable design code (generally 10% of the pure compressive capacity) and the walls will be rated for only flexural forces. If not checked, the walls will be rated for flexural-axial interaction regardless of the axial load magnitude.

- *Exclude Shear Capacity from Load Rating* checkbox

If checked, load ratings for shear capacity at the various critical sections will be excluded from the overall load rating for the RCB culvert. If not checked, the shear capacity load ratings will be accounted for in the overall load rating for the RCB culvert.

- *Analyze with Hinges at Bottom of Walls* checkbox

If checked, the structural analysis will include a hinge at the bottom of each wall to prevent moment transfer between the walls and the floor. If not checked, the walls will tie to the floor with rigid joints. This option can be using to accurately rate RCB culverts with no bottom corner reinforcing.

- *Load Rating Method* combo box

Select “LRFR” from the list to rate the RCB culvert based on LRFR methodology. Select “LFR” from the list to rate the RCB culvert based on LFR methodology. When “LFR” is selected, the user may also select the desired horizontal and vertical earth pressure specification from the *Earth Pressure Specification* combo box. Earth pressures will conform to the *Standard Specifications* when “AASHTO Standard Spec.” is selected. Earth pressures will conform to the Iowa DOT “Office Loading” when “IaDOT Office Loading” is selected.

13 Reinforcing

The Reinforcing screen is presented in Figure 13-1 for both English and metric input units. These screens are available in the Input Forms menu when CulvertCalc is in rating mode.

At each critical section, reinforcing size, spacing and percent effective for the RCB culvert being rated should be entered in this screen. Inputs allow entry of two alternating bars of differing sizes. When alternating bars are entered, the value entered in the “Spacing” textbox should be **twice** the distance between adjacent Bar 1 and Bar 2. For both the slab and floor, the user may input the percent effective for the reinforcing if it is not fully developed at the critical section. To aid the user in evaluating the reinforcing effectiveness, the critical section locations can be displayed in the *Critical Section Locations* textbox by pressing the *Update* button. Critical section locations are a function of both geometrical properties and reinforcing input and thus the *Update* button should be pressed whenever current critical section locations are desired.

Reinforcing

Slab

	Bar 1 Size	Bar 2 Size	Spacing (in)	Percent Effective (%)	
				Flexure	Shear
Top - Corner	4	None	6	100	100
Top - Interior Wall - Exterior Cell	4	None	6	100	100
Top - Interior Wall - Interior Cell	4	None	6	100	100
Bottom - Midspan - Exterior Cell	4	None	6	100	
Bottom - Midspan - Interior Cell	4	None	6	100	

Floor

	Bar 1 Size	Bar 2 Size	Spacing (in)	Percent Effective (%)	
				Flexure	Shear
Bottom - Corner	4	None	6	100	100
Bottom - Interior Wall - Exterior Cell	4	None	6	100	100
Bottom - Interior Wall - Interior Cell	4	None	6	100	100
Top - Midspan - Exterior Cell	4	None	6	100	
Top - Midspan - Interior Cell	4	None	6	100	

Exterior Wall

	Bar 1 Size	Bar 2 Size	Spacing (in)
Outside Face - Top Corner	4	None	6
Outside Face - Bottom Corner	4	None	6
Inside Face - Mid-Height	4	None	6

Interior Wall

	Bar 1 Size	Bar 2 Size	Spacing (in)
One Face	4	None	6

Critical Section Locations

Update

Close Restore Defaults

a. English units

Reinforcing

Slab

	Bar 1 Size	Bar 2 Size	Spacing (mm)	Percent Effective (%)	
				Flexure	Shear
Top - Corner	10M	None	150	100	100
Top - Interior Wall - Exterior Cell	10M	None	150	100	100
Top - Interior Wall - Interior Cell	10M	None	150	100	100
Bottom - Midspan - Exterior Cell	10M	None	150	100	
Bottom - Midspan - Interior Cell	10M	None	150	100	

Floor

	Bar 1 Size	Bar 2 Size	Spacing (mm)	Percent Effective (%)	
				Flexure	Shear
Bottom - Corner	10M	None	150	100	100
Bottom - Interior Wall - Exterior Cell	10M	None	150	100	100
Bottom - Interior Wall - Interior Cell	10M	None	150	100	100
Top - Midspan - Exterior Cell	10M	None	150	100	
Top - Midspan - Interior Cell	10M	None	150	100	

Exterior Wall

	Bar 1 Size	Bar 2 Size	Spacing (mm)
Outside Face - Top Corner	10M	None	150
Outside Face - Bottom Corner	10M	None	150
Inside Face - Mid-Height	10M	None	150

Interior Wall

	Bar 1 Size	Bar 2 Size	Spacing (mm)
One Face	10M	None	150

Critical Section Locations

Update

Close Restore Defaults

b. Metric units

Figure 13-1 Reinforcing Screen

14 Analysis and Results

The Analysis and Results screen configuration changes to reflect the program mode. For design mode, the Analysis and Results screen is configured as shown in Figure 14-1 and the various options in this screen for performing a RCB culvert design and viewing the results are as follows:

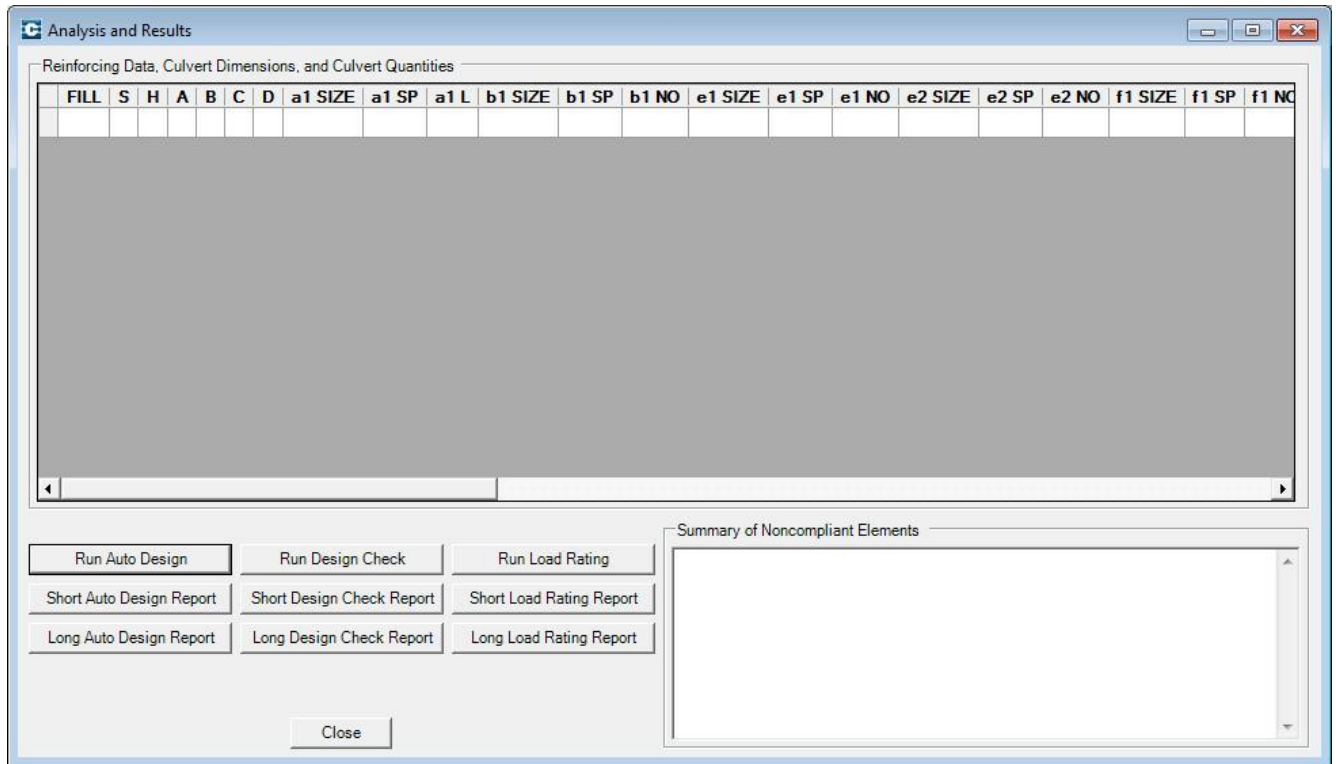


Figure 14-1 Analysis and Results Screen – Design Mode

- *Run Auto Design* button

By pressing this button, CulvertCalc will automatically design the RCB culvert based on the information entered and options selected in the input forms. The status bar, if displayed, will indicate the progress of the calculations being performed by the software. Several iterations may automatically be performed to converge on a solution. Once the calculations are complete, the *Reinforcing Data, Culvert Dimensions, and Culvert Quantities* table will be populated with output from the design calculations. Column headings correlate with the Iowa DOT RCB culvert standards. If multiple fill heights were specified, multiple lines of data will be provided in the table with each line corresponding to a specific fill height.

- *Short Auto Design Report* button

Pressing this button will open the Notepad application and display the contents of the short-format auto design report. The short-format report contains an echo of the input parameters and a summary of the RCB culvert design. Within Notepad, the report may be printed or saved for later reference. If multiple fill heights were specified, one report will be generated for each fill height. To view a report for a particular fill height, select any cell within the row of output data for that particular fill height and press *Short Auto Design Report*.

- *Long Auto Design Report* button

Pressing this button will open the Notepad application and display the contents of the long-format auto design report. The long-format report contains an echo of the input parameters, structural model properties, section forces for the component loads and load combinations, details of the concrete design calculations and a summary of the RCB culvert design. Structural model properties, section forces for the component loads and load combinations, and details of the concrete design calculations will be presented multiple times when more than one iteration is necessary to converge on a solution. Within Notepad, the report may be printed or saved for later reference. If multiple fill heights were specified, one report will be generated for each fill height. To view a report for a particular fill height, select any cell within the row of output data for that particular fill height and press *Long Auto Design Report*.

- *Run Design Check* button

The Design Check feature allows a specified design to be evaluated for conformance to the *LRFD Specifications*. To check a design, the barrel configuration (single, twin or triple) should first be identified in the *Culvert Geometry* screen. This will format the *Reinforcing Data*, *Culvert Dimensions*, and *Culvert Quantities* table in the Analysis and Results screen for the desired barrel configuration. The appropriate values should then be entered in the table for the design that is being evaluated. Units for fill height (FILL), cell span (S) and cell height (H) need to be entered in decimal feet units. Reinforcing bar lengths need to be entered in feet-inch format (i.e. 5'-9) and all other dimensions are entered in decimal inch units.

Once all cells in one row are populated with the desired design information, input values and option selections on all input forms should be modified as desired for the design evaluation. The values entered in the *Reinforcing Data*, *Culvert Dimensions*, and *Culvert Quantities* table for fill height (FILL), cell span (S), cell height (H), slab thickness (A), floor thickness (B) and wall thickness (C) will overwrite values entered on the *Fill Properties* and *Culvert Geometry* input screens.

Next, select any cell in the desired row of data in the *Reinforcing Data*, *Culvert Dimensions*, and *Culvert Quantities* table and press *Run Design Check* to evaluate the design. The status bar, if displayed, will indicate the progress of the calculations being performed by CulvertCalc. Once complete, the *Summary of Noncompliant Elements* textbox will be populated with results from the design evaluation. A message stating all requirements are satisfied will be displayed if all elements are found to conform to the *LRFD Specifications*. Otherwise, a list of each nonconforming element will be displayed.

- *Short Design Check Report* button

Pressing this button will open the Notepad application and display the contents of the short-format design check report. The short-format report contains an echo of the input parameters and a summary of the various design checks performed. Required values

are compared to corresponding provided values and a statement as to whether the provided reinforcing is or is not adequate is presented. Within Notepad, the report may be printed or saved for later reference.

- *Long Design Check Report* button

Pressing this button will open the Notepad application and display the contents of the long-format design check report. The long-format report contains an echo of the input parameters, structural model properties, section forces for the component loads and load combinations, and a summary of the various design checks performed. Required values are compared to corresponding provided values and a statement as to whether the provided reinforcing is or is not adequate is presented. Within Notepad, the report may be printed or saved for later reference.

- *Run Load Rating* button

A load rating can be performed from the *Analysis and Results* screen when CulvertCalc is in design mode utilizing the culvert geometry and reinforcing information displayed in the *Reinforcing Data*, *Culvert Dimensions*, and *Culvert Quantities* table. To perform the rating, first select any cell in the desired row of data and press the *Run Load Rating* button. The load rating will conform to the LRFR methodology and will include all design vehicles currently selected in the *Design Vehicles* checked list box on the *Live Load* input screen. The status bar, if displayed, will indicate the progress of the rating calculations being performed by CulvertCalc. Once complete, the *Load Rating Results* textbox will be populated with the governing rating factor for each design vehicle.

- *Short Load Rating Report* button

Pressing this button will open the Notepad application and display the contents of the short-format load rating report. The short-format report contains an echo of the input parameters and a summary of the governing rating factors for each design vehicle. Within Notepad, the report may be printed or saved for later reference.

- *Long Load Rating Report* button

Pressing this button will open the Notepad application and display the contents of the long-format load rating report. The long-format report contains an echo of the input parameters, structural model properties, section forces for the component loads, details of the load rating calculations performed and a summary of the governing rating factors for each design vehicle. Within Notepad, the report may be printed or saved for later reference.

When in rating mode, the Analysis and Results screen is configured as shown in Figure 14-2 and the various options in this screen for performing a RCB culvert load rating and viewing the results are as follows:

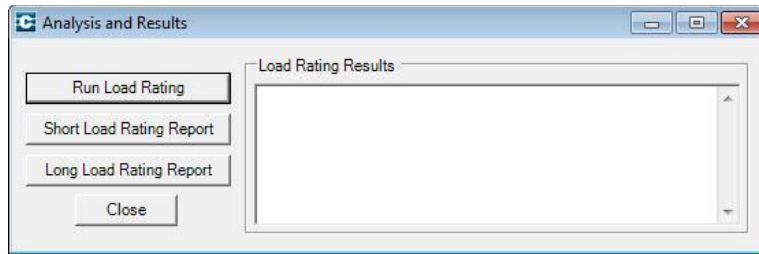


Figure 14-2 Analysis and Results Screen – Rating Mode

- *Run Load Rating* button

By pressing this button, CulvertCalc will perform a load rating based on information and options selected in the input forms. The status bar, if displayed, will indicate the progress of the calculations being performed by the software. Once the calculations are complete, the Load Rating Results textbox will be populated with the governing rating factor for each design vehicle selected in the *Design Vehicles* checked list box on the *Live Load* input screen.

- *Short Load Rating Report* button

Pressing this button will open the Notepad application and display the contents of the short-format load rating report. The short-format report contains an echo of the input parameters and a summary of the governing rating factors for each design vehicle. Within Notepad, the report may be printed or saved for later reference.

- *Long Load Rating Report* button

Pressing this button will open the Notepad application and display the contents of the long-format load rating report. The long-format report contains an echo of the input parameters, structural model properties, section forces for the component loads, details of the load rating calculations performed and a summary of the governing rating factors for each design vehicle. Within Notepad, the report may be printed or saved for later reference.

In order for the reports to display with the correct format in the Notepad application, ensure the font is set to “Lucida Console”. The font can be change under the *Format / Font* menu item in the Notepad application.

Appendix A Input Field Default, Minimum, and Maximum Values

		Input Field	Units	Default Value	Min. Value	Max. Value
Culvert Geometry	(English Units)	Cell Span	ft.	3	3	26
		Cell Height	ft.	3	3	20
		Min. Slab Thickness	in.	8	8	36
		Min. Ext. Wall Thickness	in.	9	8	36
		Min. Int. Wall Thickness	in.	9	8	36
		Min. Floor Thickness	in.	10	8	40
		Max. Slab, Floor and Wall Thickness	in.	36	12	48
		Haunch Length/Width	in.	6	0	12
		Frost Trough Height	in.	4	0	12
		Width of Constant Depth Portion of Frost Trough	in.	4	0	6
		Width of Tapered Portion of Frost Trough	in.	6	0	6
		Floor Extension Beyond Outside Face of Exterior Wall	in.	3	0	9
		Integral Wearing Surface Thickness	in.	0	0	3
		Mud Mat Thickness	in.	2	0	3
Culvert Geometry	(Metric Units)	Cell Span	mm	914	900	8000
		Cell Height	mm	914	900	6000
		Slab Thickness	mm	200	200	900
		Ext. Wall Thickness	mm	225	200	900
		Int. Wall Thickness	mm	225	200	900
		Floor Thickness	mm	250	200	1000
		Haunch Length/Width	mm	150	0	300
		Frost Trough Height	mm	100	0	300
		Width of Constant Depth Portion of Frost Trough	mm	100	0	150
		Width of Tapered Portion of Frost Trough	mm	150	0	150
		Floor Extension Beyond Outside Face of Exterior Wall	mm	75	0	230
		Integral Wearing Surface Thickness	mm	0	0	75
		Mud Mat Thickness	mm	50	0	75
Fill Properties	(English Units)	Fill Height	ft.	0	0	100
		Min. Fill Height	ft.	0	0	99
		Max. Fill Height	ft.	55	1	100
		Fill Height Increment	ft.	2	0.25	5
		Soil-Structure Interaction Factor	--	1	0	5
		Water Height Above Bottom of Slab	ft.	0	0	100
		Pavement Thickness	in.	10	0	24
Fill Properties	(Metric Units)	Fill Height	mm	0	0	30000
		Soil-Structure Interaction Factor	--	1	0	5
		Pavement Thickness	mm	250	0	600

(Table continued on next page)

		Input Field	Units	Default Value	Min. Value	Max. Value
Live Load		Enter Fill Interaction Factor	--	0	0	5
		Tire Patch Length	in.	10	0	50
		Tire Patch Width	in.	20	0	50
		Equivalent Height of Soil	ft.	2	0	10
		Max. Percentage of Live Load	%	33	0	100
		Neglect for Fill Depths Greater Than	ft.	8	0.1	100
		Live Load Step Distance (Max.)	in.	24	1	30
		Axle Spacing Increment	ft.	4	1	8
Materials (English Units)		Concrete Unit Weight	kcf	0.15	0	1
		Concrete Compressive Strength	ksi	4	1	20
		Concrete Max. Aggregate Size	in.	0.75	0.25	2
		Reinforcing Steel Yield Strength	ksi	60	10	100
		Soil Unit Weight	kcf	0.12	0	1
		Effective Friction Angle	deg	30	0	89
		Water Unit Weight	kcf	0.0624	0	1
		Pavement Unit Weight	kcf	0.15	0	1
Materials (Metric Units)		Concrete Unit Weight	kg/m3	2400	0	10000
		Concrete Compressive Strength	MPa	28	17	52
		Reinforcing Steel Yield Strength	MPa	400	250	400
		Soil Unit Weight	kg/m3	1920	0	10000
		Effective Friction Angle	deg	30	0	89
		Pavement Unit Weight	kg/m3	2400	0	10000
Concrete Cover Dim. (English Units)		Edge Clearance - Typical	in.	2	1	4
		Edge Clearance - Top of Slab	in.	2	1	4
		Edge Clearance - Top of Floor	in.	2.25	1	4
		Edge Clearance - Bottom of Floor	in.	3.5	1	4
		End Clearance - Vertical Bar - Top	in.	2	1	4
		End Clearance - Vertical Bar - Bottom (Min.)	in.	3	1	4
		End Clearance - Transverse Bar	in.	2	1	4
Concrete Cover Dim. (Metric Units)		Edge Clearance - Typical	mm	50	25	100
		Edge Clearance - Top of Slab	mm	50	25	100
		Edge Clearance - Top of Floor	mm	60	25	100
		Edge Clearance - Bottom of Floor	mm	90	25	100
		End Clearance - Vertical Bar - Top	mm	50	25	100
		End Clearance - Vertical Bar - Bottom (Min.)	mm	75	25	100
		End Clearance - Transverse Bar	mm	50	25	100

(Table continued on next page)

	Input Field	Units	Default Value	Min. Value	Max. Value
Load Factors, Load Modifiers and Exposure Factors - Design Mode	Strength I - Load Factor - DC (Max.)	--	1.25	0	10
	Strength I - Load Factor - DC (Min.)	--	0.9	0	10
	Strength I - Load Factor - DW (Max.)	--	1.5	0	10
	Strength I - Load Factor - DW (Min.)	--	0.65	0	10
	Strength I - Load Factor - EH (Max.)	--	1.35	0	10
	Strength I - Load Factor - EH (Min.)	--	1	0	10
	Strength I - Load Factor - EV (Max.)	--	1.3	0	10
	Strength I - Load Factor - EV (Min.)	--	0.9	0	10
	Strength I - Load Factor - LL + IM	--	1.75	0	10
	Strength I - Load Factor - LS	--	1.75	0	10
	Strength I - Load Factor - WA	--	1	0	10
	Strength I - Load Modifier - DC (Max.)	--	1	0	10
	Strength I - Load Modifier - DC (Min.)	--	1	0	10
	Strength I - Load Modifier - DW (Max.)	--	1	0	10
	Strength I - Load Modifier - DW (Min.)	--	1	0	10
	Strength I - Load Modifier - EH (Max.)	--	1.05	0	10
	Strength I - Load Modifier - EH (Min.)	--	1	0	10
	Strength I - Load Modifier - EV (Max.)	--	1.05	0	10
	Strength I - Load Modifier - EV (Min.)	--	1	0	10
	Strength I - Load Modifier - LL + IM	--	1	0	10
	Strength I - Load Modifier - LS	--	1	0	10
	Strength I - Load Modifier - WA	--	1	0	10
	Strength II - Load Factor - DC (Max.)	--	1.25	0	10
	Strength II - Load Factor - DC (Min.)	--	0.9	0	10
	Strength II - Load Factor - DW (Max.)	--	1.5	0	10
	Strength II - Load Factor - DW (Min.)	--	0.65	0	10
	Strength II - Load Factor - EH (Max.)	--	1.35	0	10
	Strength II - Load Factor - EH (Min.)	--	1	0	10
	Strength II - Load Factor - EV (Max.)	--	1.3	0	10
	Strength II - Load Factor - EV (Min.)	--	0.9	0	10
	Strength II - Load Factor - LL + IM	--	1.35	0	10
	Strength II - Load Factor - LS	--	1.35	0	10
	Strength II - Load Factor - WA	--	1	0	10
	Strength II - Load Modifier - DC (Max.)	--	1	0	10
	Strength II - Load Modifier - DC (Min.)	--	1	0	10
	Strength II - Load Modifier - DW (Max.)	--	1	0	10
	Strength II - Load Modifier - DW (Min.)	--	1	0	10
	Strength II - Load Modifier - EH (Max.)	--	1.05	0	10
	Strength II - Load Modifier - EH (Min.)	--	1	0	10
	Strength II - Load Modifier - EV (Max.)	--	1.05	0	10
	Strength II - Load Modifier - EV (Min.)	--	1	0	10

(Table continued on next page)

	Input Field	Units	Default Value	Min. Value	Max. Value
Load Factors, Load Modifiers and Exposure Factors - Rating Mode	Strength II - Load Modifier - LL + IM	--	1	0	10
	Strength II - Load Modifier - LS	--	1	0	10
	Strength II - Load Modifier - WA	--	1	0	10
	Service I - Load Factor - DC	--	1	0	10
	Service I - Load Factor - DW	--	1	0	10
	Service I - Load Factor - EH	--	1	0	10
	Service I - Load Factor - EV	--	1	0	10
	Service I - Load Factor - LL + IM	--	1	0	10
	Service I - Load Factor - LS	--	1	0	10
	Service I - Load Factor - WA	--	1	0	10
	Service I - Exposure Factor - Slab	--	1	0.1	1
	Service I - Exposure Factor - Walls	--	1	0.1	1
	Service I - Exposure Factor - Floor	--	1	0.1	1
	LRFR - Strength I - Load Factor - DC (Max.)	--	1.25	0	10
	LRFR - Strength I - Load Factor - DC (Min.)	--	0.9	0	10
	LRFR - Strength I - Load Factor - DW (Max.)	--	1.5	0	10
	LRFR - Strength I - Load Factor - DW (Min.)	--	0.65	0	10
	LRFR - Strength I - Load Factor - EH (Max.)	--	1.35	0	10
	LRFR - Strength I - Load Factor - EH (Min.)	--	1	0	10
	LRFR - Strength I - Load Factor - EV (Max.)	--	1.3	0	10
	LRFR - Strength I - Load Factor - EV (Min.)	--	0.9	0	10
	LRFR - Strength I - Load Factor - LL + IM / LS (Dsn. Inv.)	--	1.75	0.1	10
	LRFR - Strength I - Load Factor - LL + IM / LS (Dsn. Opr.)	--	1.35	0.1	10
	LRFR - Strength I - Load Factor - LL + IM / LS (Legal)	--	2	0.1	10
	LRFR - Strength II - Load Factor - DC (Max.)	--	1.25	0	10
	LRFR - Strength II - Load Factor - DC (Min.)	--	0.9	0	10
	LRFR - Strength II - Load Factor - DW (Max.)	--	1.5	0	10
	LRFR - Strength II - Load Factor - DW (Min.)	--	0.65	0	10
	LRFR - Strength II - Load Factor - EH (Max.)	--	1.35	0	10
	LRFR - Strength II - Load Factor - EH (Min.)	--	1	0	10
	LRFR - Strength II - Load Factor - EV (Max.)	--	1.3	0	10
	LRFR - Strength II - Load Factor - EV (Min.)	--	0.9	0	10
	LRFR - Strength II - Load Factor - LL + IM / LS (Permit)	--	1.4	0.1	10
	LRFR - Capacity Factor - Condition Factor	--	1	0.85	1
	LRFR - Capacity Factor - Service Factor	--	1	0.85	1
	LFR - Gamma Factor - Group X	--	1.3	0.1	10
	LFR - Beta Factors - DC	--	1	0	10
	LFR - Beta Factors - LL + IM / LS (Inv.)	--	1.67	0.1	10
	LFR - Beta Factors - LL + IM / LS (Opr.)	--	1	0.1	10
	LFR - Beta Factors - EV	--	1	0	10
	LFR - Beta Factors - EH (Max.)	--	1	0	10
	LFR - Beta Factors - EH (Min.)	--	0.5	0	10